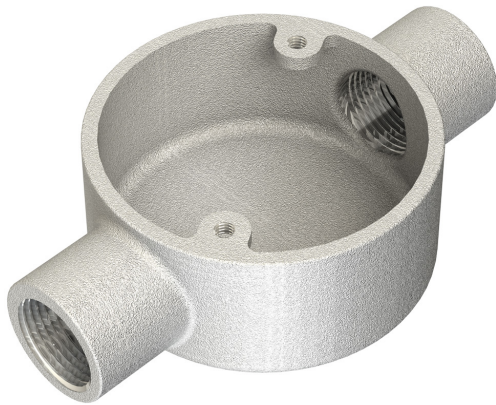


PRODUCT CODE: MB22G
MALLEABLE CONDUIT BOX



DESCRIPTION

32mm Malleable Through Conduit Box

FINISH

Hot Dipped Galvanised

MATERIAL

Malleable Iron

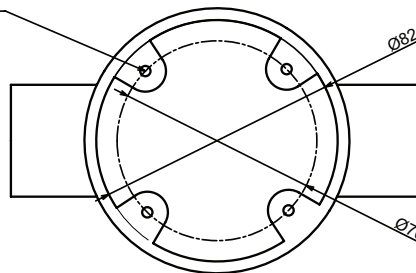
PACKAGING

Packed in qty 1

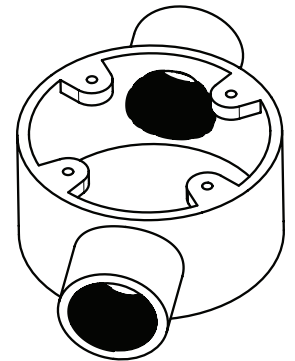
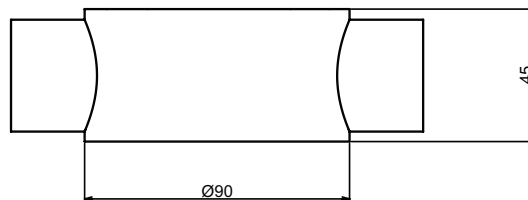
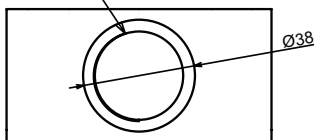
ADDITIONAL NOTES

Conforms to BS EN61386-1:2008
Compliant to LU Standard 1-085 (for use on surface & sub-surface locations)

M4 TAPPED 4 PLACES



M32 CONDUIT THREAD



Ⓢ Values are nominal and with a general tolerance ±5% unless otherwise specified